

RESCHEDULING METHODS FOR MANUFACTURING FIRMS APPLYING MAKE-TO-ORDER STRATEGY

Song, L. J.; Gu, H. P.; Jin, S. Y. & Zhao, H.

College of Mechanical Engineering, Chongqing University of Technology, Chongqing 400054, China

E-Mail: sgljn@163.com

Abstract

To combat the problem of frequent production plan change in an environment where manufacturing systems are constantly varying, an improved hybrid rescheduling strategy is proposed. Disturbance factors are classified according to their origin and influence, and their disturbance degree is determined using a fuzzy-neural network. On the basis of this, an adaptive rescheduling process for manufacturing systems has been constructed and an improved hybrid rescheduling strategy is proposed. Finally, the effectiveness of this improved strategy is illustrated by a case study of practical manufacturing. The results show that this strategy can effectively reduce rescheduling times and maintain the stability of manufacturing systems.

(Received, processed and accepted by the Chinese Representative Office.)

Key Words: Manufacturing Systems, Disturbance Degree, Rescheduling, Fuzzy-Neural Network

1. INTRODUCTION

Faced with competitive markets, an ever-changing and complex manufacturing environment, and customers' requirements for personalized, small-patch, low-cost and high-quality products, a number of manufacturing firms are shifting their manufacturing mode from Make-to-Stock (MTS) to Make-to-Order (MTO) [1, 2]. For manufacturing firms adopting an MTO production mode, rescheduling management is an effective method to decide on market strategy and production, from the perspective of both the internal and external environments. It is similarly effective when aiming to integrate warehousing logistics, production and management, and to deliver personalized products to customers on schedule and in the right quantity [3]. Current research on job shop scheduling is associated with the proposition that the circumstances are never changed, and that the rescheduling plan, once made, will be carried out until the end. However, the ever-varying market trend and the complicated producing systems of actual production always lead to the occurrence of a disturbance factor. The original scheduling plan therefore inevitably becomes unsuitable, which necessitates an adjustment (i.e. rescheduling). Rescheduling can effectively eliminate the negative effect of changes in firms' external and internal environment on its production system. Thus rescheduling has become one focus of current research into scheduling, and a subject of global interest.

At present, research into rescheduling emphasizes four aspects: rescheduling factors, rescheduling strategy, rescheduling methods and rescheduling performance evaluation [4-7]. More specifically, Chen and Ji [8] proposed a periodic rescheduling strategy with a fixed interval. This solved an improved dynamic schedule model by using a combination of a genetic algorithm and a rolling time domain optimization strategy. The strategy reduced the idle time of the machine, increased the on-time delivery rate, and improved the effectiveness and stability of the schedule model. Pfund [9] used the Lagrange relaxation algorithm to generate a rescheduling plan for a drilling process under a printed circuit board environment with two disturbance factors: uncertain processing time and machine breakdown. Guo and Nonaka [10] explored reschedule strategy and optimization under an environment solely suffering from equipment failure. Akturk and Gorgulu [11] studied equipment failure and

used the branch and bound method to determine matching dots. They proposed a match-up rescheduling method based on feedback mechanisms, which can ensure the stability of rescheduling. Li et al. [12] proposed a failure-driven rescheduling method to enhance system stability, in which the task was adjusted according to failure prediction. Mendez and Cerda [13] considered task rescheduling caused by unexpected equipment breakdown and maintenance. They were able to use the Mix integer programming method to solve rescheduling problems of parallel batch processing machines. Church and Uzsoy [14] used a hybrid rescheduling strategy (a combination of periodic and event-driven strategy) to solve the unknown reaching time of workpieces in a dynamic environment, with single machines and parallel machines as the object of study. Rangsaritratsamee et al. [15] proposed a hybrid rescheduling strategy to overcome the shortcoming of the periodic rescheduling strategy, where changes in the production system were not being tracked on time. With their new strategy, at each moment of requesting rescheduling, a genetic algorithm was used to optimize the local system so as to maintain system stability. Liu [16] studied the rescheduling of job shops suffering from equipment failure. He used a rolling time domain optimization strategy and designed an improved mechanism of the hybrid rescheduling strategy. Using an improved ant colony system algorithm then allowed him to solve his case, in order to verify the validity.

The above literature demonstrates a number of points. Firstly, the current hybrid rescheduling strategy is a combination of a periodic rescheduling strategy and an event-driven rescheduling strategy. This means that regular rescheduling is conducted, according to the specified cycle, and the effect of unexpected events on the production system is considered. This strategy can make a better response to changes taking place in the production process and can control the amount of calculation. However, only a simple combination of a periodic rescheduling strategy and an event-driven rescheduling strategy has been studied. Furthermore, the effect on production systems of unexpected disturbance factors has been mainly considered, with less attention given to the effect of gradual disturbance factors. There are three shortcomings of this approach.

① There has been no comprehensive study on disturbance factors that affect the normal operation of production systems. The disturbance factors studied in current research into rescheduling are: failure of the processing machine; processing time offset of workpieces; and customers' inserted orders. However, the origins of these factors and their influence on production systems are seldom explored profoundly or thoroughly. In actual production, these factors are usually generated at the same time, but exert different effects on production systems.

② There has been no comprehensive study on gradual disturbance factors. If production systems do not adequately respond to these factors, rescheduling frequency will increase; leading not only to system oscillation, but also increased computation effort.

③ The problem as to how to coordinate a periodic rescheduling strategy and an event-driven rescheduling strategy has not been solved, which will increase rescheduling frequency.

In this paper, the disturbance factors first classified are those which commonly occur in production process of firms adopting an MTO mode. Next, disturbance factors with fuzzy characteristics are thoroughly studied. By introducing the fuzzy neural network technique, a hybrid rescheduling strategy with the minimum interval is proposed. Finally, an adaptive rescheduling process is established, the related cases are simulated, and the validity is verified.

2. DESCRIPTION AND CLASSIFICATION OF DISTURBANCE FACTORS OF JOB SHOPS

In actual production, there are always various disturbance factors, which affect the operation of the production system and make the original scheduling plan unsuitable.

Table I: Classification of disturbance factors of job shops.

Origin of disturbance factors	Disturbance factors	Effect on production process	Disturbance methods	Disturbance degree
Inherent disturbance factors	Processing time offset	Reduces the feasibility and effectiveness of the original scheduling plan, and (accumulated offset) results in delay-shipping	Type C	medium
Disturbance factors during production	Equipment failure/reboot	Increases or decreases the number of pieces of equipment, and affects the workpiece involved	Type B	fuzzy
	The decrease of capacity utilization	Accumulated disturbance affects execution of the production plan and production quality	Type C	medium
	Workpiece reworking	Increases the amount of processing task in corresponding equipment and increases WIP	Type C	medium
	Workpiece scrap	If there are few scrap workpieces and less effect on the scheduling plan, the original plan can be carried out; otherwise, the original plan will be changed	Type B	fuzzy
	Change in WIP	If there is only a small change, and less effect on the scheduling plan, the original plan can be carried out; otherwise, the original plan will be changed	Type B	fuzzy
	Temporary process change	Changes the process route of the current batch, changes the processing task in the involved equipment	Type C	medium
	Temporary production plan change	Decomposes and recombines the present task	Type A	serious
	Flow of material not smooth	If there is little accumulated material, this will only affect the processing task of the current batch; if there is much, it will affect the processing task of all batches	Type B	fuzzy
Disturbance factors caused by change of an enterprise's external environment	Customers' inserted order	Adds rush workpiece; making the current scheduling plan invalid	Type A	serious
	Reduction or cancel of order	Makes the original scheduling plan invalid, and necessitates a thorough adjustment to the original plan	Type A	serious
	Rush order	Changes workpiece processing priority, increases rush order, changes sequence of tasks of the current batch	Type A	serious
	Customers' requirement for specific process	Changes the route of processing the current workpiece, changes the processing task in the involved equipment	Type C	medium
Discrete disturbance factors	Change to the working efficiency of the human workforce	Accumulated disturbance affects the execution of the production plan and production quality	Type B	fuzzy
	Absence of the human workforce	Affects the involved station, less effect on the current scheduling plan	Type C	medium
	Operating mistake	If there is little scrap material, this will only affect the processing task of the current batch; if there is much, it will affect the processing task of all batches	Type B	fuzzy

These factors can be divided into four categories, according to their origin: the inherent disturbance factors; disturbance factors during production; disturbance factors caused by changes to an enterprise's external environment; and discrete disturbance factors [17, 18]. Table I illustrates these disturbance factors.

In order to make the production system effectively respond to job shop disturbance factors, the 16 disturbance factors listed in Table I are divided, according to their effect on the production process and their disturbance degree, into three categories: type A, type B, and type C. Type A disturbance factors are events which, as long as they occur once, can seriously affect the production system. These factors obey discrete distribution, such as urgent customer orders, or temporary production plan change. Type B disturbance factors are similar to type A disturbance factors in terms of their source and characteristics (discrete distribution). Their disturbance degree is, however, less intense than those of type A. They are characterized by fuzziness. Reasonable countermeasures should therefore be formulated according to the actual situation. Type C disturbance factors refer to those which have little effect on the production system, but change frequently; belonging to continuous disturbance events.

3. AN IMPROVED HYBRID RESCHEDULING STRATEGY

3.1 Disturbance degree judgment based on a fuzzy neural network

Because type B disturbance factors are characterized by fuzziness, it is difficult to establish a suitable function to describe the relationship between type B factors and the output value of the disturbance degree. Therefore, a fuzzy neural network is used to evaluate the degree of the disturbance of production systems by type B disturbance factors. A fuzzy neural network, which has the advantages of both fuzzy mathematics and a neural network, is very suitable for solving fuzzy, nonlinear and classified problems and is therefore often used in decision support systems [19-21].

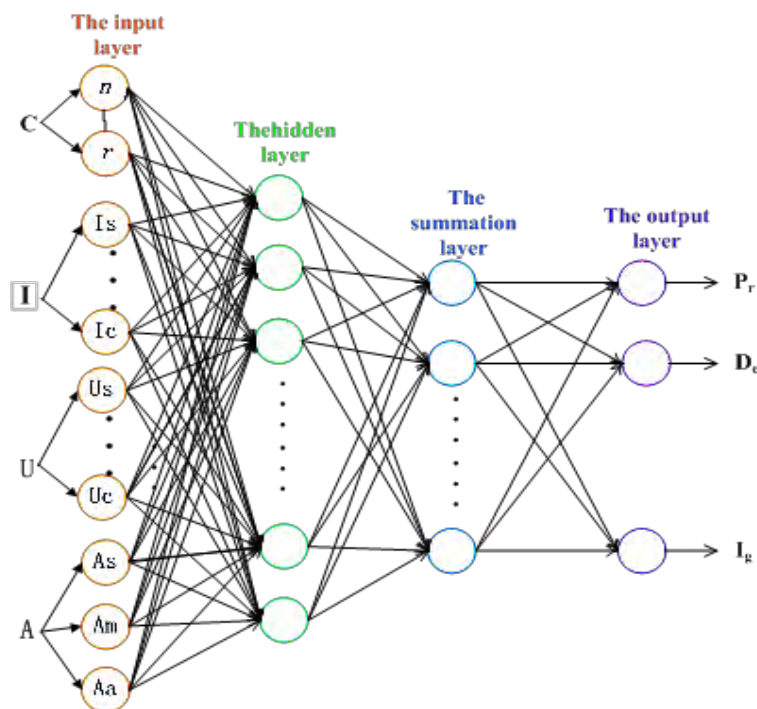


Figure 1: Structure chart of the probabilistic neural network.

In this paper, the fuzzy neural network is used to deal with type B disturbance factors and mainly includes two parts: fuzzy processing of the parameters, and training of the neural

network. Fuzzy processing of the parameters is a pre-treatment of the original parameter data affecting the degree of disturbance of production systems. For instance, membership degree can be used to represent disturbance degree and can thus be normalized, as the input of a neural network. Neural network training is used to establish the nonlinear mapping relation between input parameters and disturbance degree. In this article, a probabilistic neural network is selected for the quantitative analysis of type B disturbance factors, due to its many advantages. These advantages include the simplicity of its training process, as well as its fast convergence speed, good fault tolerance, and arbitrary linear approximation. It is mainly composed of the input layer, the hidden layer, the summation layer and the output layer, as shown in Fig. 1.

According to Fig. 1, the input layer contains four parameters which affect how the effects of type B disturbance factors on the production system are judged. These parameters are, respectively: type of disturbance factors, C ; occurrence strength of disturbance factors, I ; urgent level of disturbance factors, U ; and cumulative intensity of disturbance factors, A . In the input layer, type B disturbance factors have two types: changes in the production environment, n , and resource scheduling failure, r . Except type parameter, all the other three parameters (I , U , and A) need fuzzy processing before input. At the same time, rescheduling requests (P_r , D_e , and I_g) caused by type B disturbances are set as the output of the neural network. This reflects the degree of disturbance of the production system by type B disturbance factors. Among these requests, P_r represents immediately executed rescheduling requests, D_e represents delayed rescheduling requests, and I_g represents negligible rescheduling requests. The output value is set as follows: the acceptance of the rescheduling request is 1, while the refusal of the rescheduling request is 0. The implementation of the fuzzy neural network method is not specified in this paper.

3.2 Hybrid rescheduling strategy based on a fuzzy neural network

In order to overcome the shortcomings of the existing rescheduling strategy, and after using a fuzzy neural network to analyze type B disturbance factors, an improved hybrid rescheduling strategy is proposed. The existing strategy was mainly improved in the following three aspects:

- ① A comprehensive analysis of the impact of various disturbance factors on the production system;
- ② Quantification of the disturbance degree of type B disturbance factors, and the reasonable selection of a processing method;
- ③ The added constraint of a minimum rescheduling interval, which coordinates the response of the production system to a variety of disturbance factors and reduces rescheduling frequency.

The rescheduling strategy is as follows:

① For a disturbance factor generated in the manufacturing workshop, its type is first judged, its influence on the production system is then analysed, and finally the appropriate response mode is selected. If this disturbance factor is a type A factor, an immediate response is made, and if it is a type C factor, a periodic rescheduling strategy is used to respond to it. If the disturbance factor it is a type B factor, the disturbance degree of the system's factors is judged, according to quantitative analysis using the fuzzy neural network. Next, one of three rescheduling requests (P_r , D_e , or I_g ; caused by type B disturbance factors) is obtained, as a production system response in the subsequent step. According to the above method, a rescheduling request set T_1 is obtained, where $T_1 = \{t_{1i} | t_{1i} = t_0 + \zeta\}$, t_0 is the starting time of the original schedule, and ζ is a period from the starting time to any rescheduling request time.

② Another set of rescheduling requests T_2 is obtained according to the periodic rescheduling strategy, where $T_2 = \{t_{2i} | t_{2i} = t_0 + t_i\}$, $t_i = i \cdot T_0$, and $i = 1, 2, \dots, n$. T_0 is the rescheduling

cycle, i.e. the time required for rescheduling, which is determined by staff according to actual conditions. Considering that T_1 and T_2 are generated according to different rescheduling strategies, the combination of these two leads to a large or small interval between the two adjacent rescheduling requests. The large interval situation is constrained by T_0 , and the small interval situation by ΔT_{min} , which also avoids frequent rescheduling requests.

③ Set $q_i (i = 1, 2, \dots, n)$ is used as one of the rescheduling requests, and $S_i (i = 1, 2, \dots, n)$ as the current scheduling plan.

a, if $q_i \in T_2$, rescheduling is started;

b, if $q_i \in T_1$, the disturbance factor is a type A factor, and the production system is seriously affected, rescheduling is started immediately;

c, if $q_i \in T_1$ and the disturbance factor is a type B factor, the fuzzy neural network is used for quantitative analysis of the factor is impact on the production system. If a P_r -typed rescheduling request (i.e. $q_i \in P_r$) is obtained, rescheduling is started immediately. If a D_e -typed rescheduling request (i.e. $q_i \in D_e$) is obtained, Δt (i.e. the interval between the starting time of the last rescheduling plan S_{i-1} and the current rescheduling plan) is calculated. If $\Delta t > \Delta T_{min}$, rescheduling is started immediately; if $\Delta t < \Delta T_{min}$, t_{1i} is replaced with a new rescheduling request time, t_{1i}' . Where $t_{1i}' = t_{1i} - \Delta t + \Delta T_{min}$, rescheduling is started at the moment of t_{1i}' . If an I_g -typed rescheduling request (i.e. $q_i \in I_g$) is obtained, rescheduling is unnecessary, as the disturbance factor has little influence on production systems.

d, If $q_i \in T_1$, and the disturbance factor is a type C factor, it is processed according to the rescheduling request obtained by using the periodic rescheduling strategy.

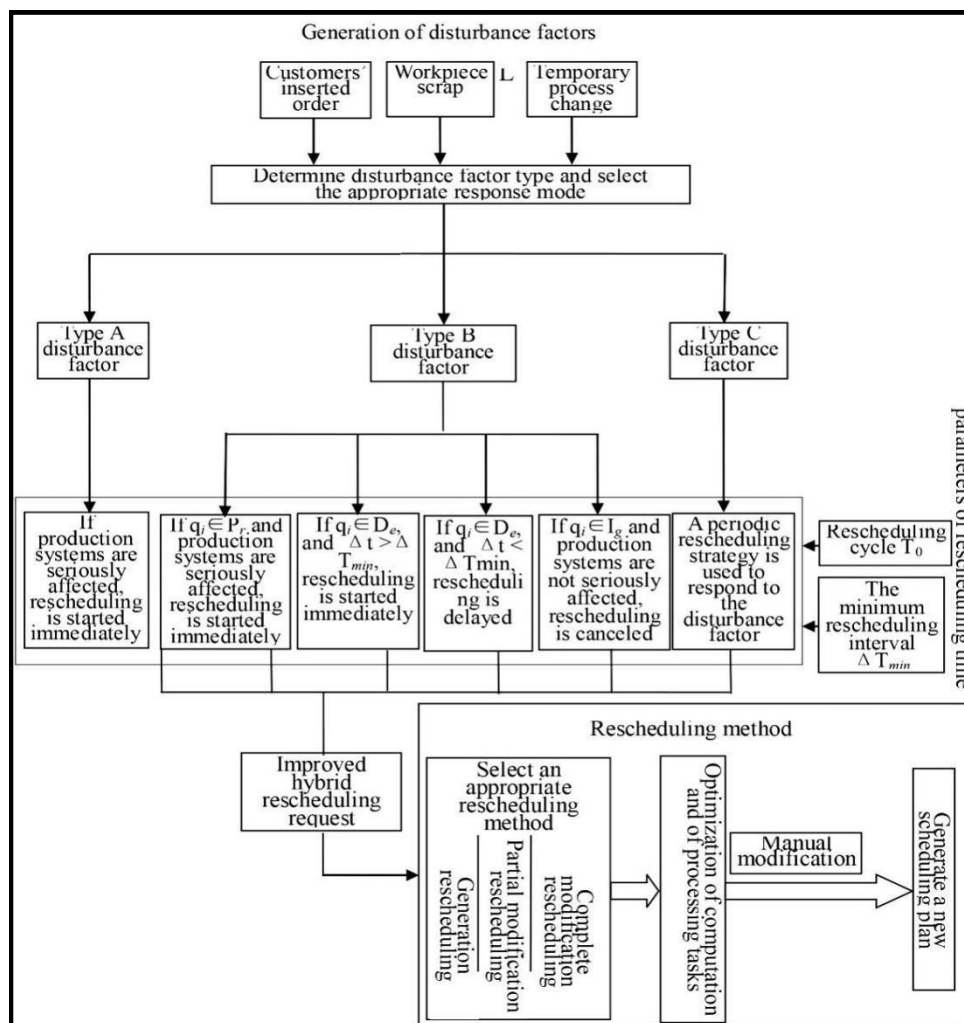


Figure 2: Flow chart of an improved hybrid rescheduling strategy.

The flow chart of a rescheduling strategy is shown in Fig. 2. Using this method, not only can rescheduling be completed within the specified rescheduling cycle, but all kinds of disturbance factors produced in the manufacturing plant can also be effectively dealt with, especially those disturbance factors with fuzzy characteristics. At the same time, the strategy adds a minimum rescheduling interval constraint, which coordinates the relationship of the interval between periodic rescheduling requests and event driven rescheduling requests; effectively reducing rescheduling times.

4. APPLICATION OF THE RESCHEDULING STRATEGY AND SIMULATION RESULTS

A flexible job shop containing 6 sets of processing machines ($M_1, M_2, M_3, M_4, M_5,$ and M_6) and with five workpieces ($J_1, J_2, J_3, J_4,$ and J_5) to be processed, was selected as the object of study. The optional machines for each process and the time required to process workpieces in different machines are shown in Table II and Table III, respectively. When disturbance factors, such as a customer inserted order, a processing machine failure, or a processing time offset, were generated, they were dealt with using the rescheduling strategy and process proposed in this paper. The progress and the results were then analysed.

Table II: Optional machines for each process.

Workpiece	Optional machines for each process				
	process1	process2	process3	process4	process5
workpiece1	1,2,3	2,4,5	1,2,3	1,4,5	2,3,4,5,6
workpiece2	1,3,5	1,2,5	3,5,6	2,4,6	1,2,3,5
workpiece3	1,2	2,4,5	3,5,6	1,2,3,4,5	1,2,5,6
workpiece4	1,3,4	2,4,6	1,3,6	1,3,4,5,6	2,3,4,5
workpiece5	1,2,3,4,5,6	1,2,4,5	1,3,6	2,4,6	1,3,4,5

Table III: The processing time of different workpieces.

Workpiece	Processing time (min)				
	process1	process2	process3	process4	process5
workpiece1	2,3,4	3,2,4	1,4,5	4,3,5	6,8,7,6,9
workpiece2	3,5,2	4,3,6	4,7,11	5,7,5	4,5,7,5
workpiece3	5,6	4,3,5	13,9,12	6,5,7,4,8	8,6,7,8
workpiece4	9,7,9	6,4,5	1,3,3	6,9,7,5,4	8,7,8,8
workpiece5	4,3,7,9,3,6	5,6,4,5	6,4,3	5,7,7	7,8,7,8

① Generation of the initial scheduling scheme

According to the scale and computing complexity of the scheduling problem of the flexible job shop, the problem was solved using a dual layer encoding genetic algorithm. The parameters of this genetic algorithm were as follows: population size $P = 100$, maximum number of iterations $MAX = 400$, crossover probability $P_c = 0.8$, mutation probability $P_m = 0.1$, and generation gap 0.1. After iterative calculation, the initial scheduling scheme was obtained, with the maximum completion time of 27 min. The processing procedures are shown in Fig. 3.

② Optimization simulation of the rescheduling scheme

If three different kinds of disturbance factors are all generated in the course of the execution of the scheduling scheme, they are dealt with using the previously proposed fuzzy neural network. The disturbance degree of the production systems and the corresponding rescheduling requests were obtained, as shown in Table IV.

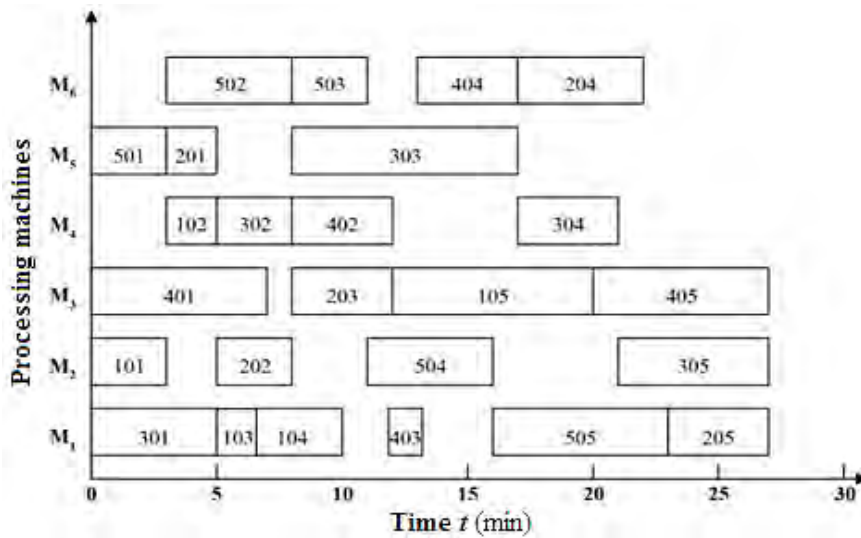


Figure 3: The initial rescheduling plan.

Table IV: Classification of disturbance factors and output of the neural network.

No.	Disturbance factors	Disturbance mode	Output of the neural network		
			P_r	D_e	I_g
1	Customer's inserted order	A-typed	1	0	0
2	Processing machine failure	B-typed	1	0	0
3	Processing time offset	C-typed	0	1	0

① Customer's inserted order

When type A disturbance factors, like a customer's inserted order, emerge, the new production task is added to the original production scheduling scheme, according to the new order index (such as the date of delivery, or the number of workpieces). Thus, a new scheduling scheme is generated. Disturbance factors of this kind therefore have a great influence on production systems. When dealing with this kind of disturbance factor the generative rescheduling method can be used. Priority is thereby given to tasks in their inserted order, and the other tasks affected by the customer emergency order are then reorganized.

When the initial scheduling scheme was executed for 13 minutes, a notice was received of the need for processing workpieces (J_6 , J_7 , and J_8). Optional machines for each process and the times required to process workpieces in different machines are shown in Table V and Table VI, where * represents the absence of any process.

Table V: Optional machines for each process of inserted workpieces.

Workpiece	Optional machines for each process				
	process1	process2	process3	process4	process5
workpiece6	2,3,4,5	1,3,5,6	2,3,5	1,3,4,5	1,4,5,6
workpiece7	1,2,3,5	2,3,4,5	1,3,5,6	*	*
workpiece8	2,4,6	1,2,4,5	2,4,5,6	1,3,4	*

Table VI: The processing times of different inserted workpieces.

Workpiece	Processing time (min)				
	process1	process2	process3	process4	process5
workpiece6	5,6,4,7	5,6,4,7	4,5,5	4,7,6,5	5,7,6,7
workpiece7	3,4,5,5	5,4,5,6	6,5,6,9	*	*
workpiece8	6,7,5	5,4,3,5	5,7,9,12	6,7,4	*

The following tasks were then reorganized using the generative rescheduling method, with priority given to tasks in their inserted order. According to the scheduling rules, a processed workpiece should continue to be processed, until the corresponding process is finished (such as the third process of the workpiece J_3 , the *fifth* process of the workpiece J_1 and the fourth processes of the workpiece J_5 in Fig. 4). The processing of workpieces after 13 minutes is optimized using the double layer encoding genetic algorithm; obtaining a rescheduling scheme with a maximum completion time of 35 minutes. From the following figure, it can be seen that processing priority was given to the three urgent workpieces. The remaining operations of processing J_1 , J_2 , J_3 , J_4 , and J_5 were carried out upon completion of the inserted order. Workpiece J_1 in the fifth process, workpiece J_3 in the fourth process, and workpiece J_3 in the fifth process were also processed not in their original machines, but in new ones.

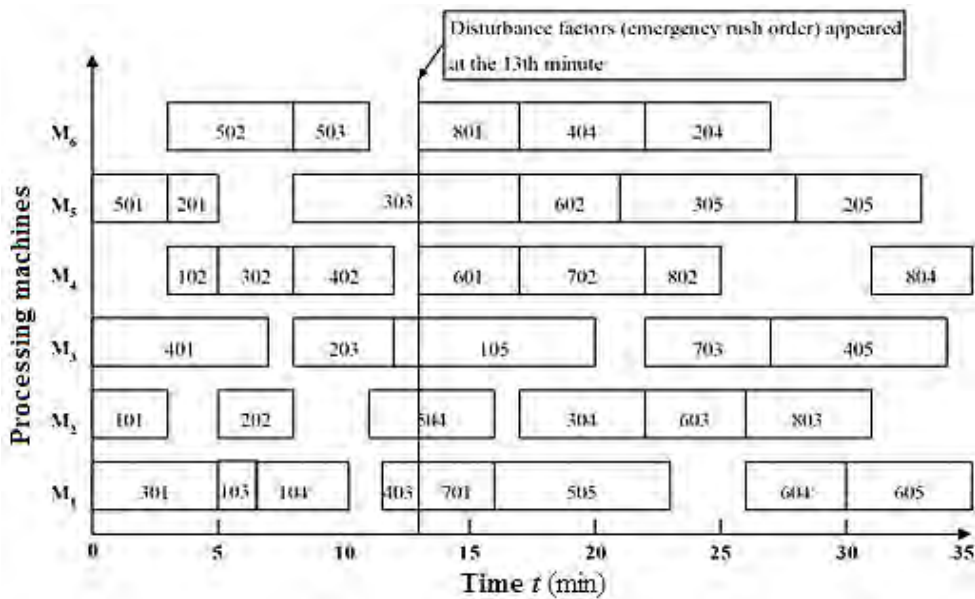


Figure 4: The rescheduling plan after reception of a customer's inserted order.

② Equipment failure

When a machine breaks down, a fuzzy neural network algorithm is used first. This determines the influence of the disturbance factors on the production system and obtains the P_r , D_e and I_g rescheduling requests, as the response mode of the production system. Next, according to the results of the preceding step, the appropriate rescheduling method for processing is selected. In the flexible job shop, each process of a workpiece can be completed on different machines. The partial modification rescheduling method can therefore be used to respond to disturbances. The partial modification rescheduling method is specified as follows: if there is a machine in the same category as the breakdown one in the workshop, the remaining work to be done in the breakdown machine can be transferred to this other machine; if there is no machine in the same category as the breakdown one in the workshop, it is necessary to analyse whether the affected process has an alternative process. If this is the case, the alternative is used, if not, the remaining work to be done in the breakdown machine will be transferred to other machines.

In this paper, it is assumed that, at the 13th minute, processing machine M_6 in the initial scheduling scheme broke down and could not be repaired within a short period. At the same time, there were no processing machines in the same category as M_6 . The remaining processing tasks therefore needed to be completed on a newly-selected machine, and the processing sequence needed to be rearranged. According to Fig. 3, an initial schedule Gantt chart, when machine M_6 broke down, some processes were directly affected, including

workpiece J_4 in the fourth process and workpiece J_2 in the fourth process. Others were indirectly affected, including workpiece J_3 in the fifth process. In the initial scheduling scheme, the priority of the workpieces given to $J_1, J_2, J_3, J_4,$ and J_5 was: 2, 4, 3, 5, and 2. To perform quantitative analysis of the disturbance factor using a fuzzy neural network, fuzzy processing of the parameters is first carried out:

- a, The type of disturbance factor C is determined.
Equipment failure is one kind of resource scheduling failure r .

- b, The intensity of the disturbance factor I is calculated.
The number of relative processes affected by the disturbance n_r is:

$$n_r = \frac{n_a}{N} = \frac{3}{25} = 0.12$$

The membership function $R(x)$ is used to calculate the membership degree of subsets $I_s, I_w, I_m,$ and I_c . The results are as follows: $I_s=0.6, I_w=0.69, I_m=0.02,$ and $I_c=0$.

- c, The emergency degree of the disturbance factor U is calculated.
The relative priority of the working procedure affected by the disturbance factor p_m is:

$$p_m = \frac{\sum_{i=1}^{n_a} p_i}{n_a} / P_{max} = \frac{(5 + 4 + 3)}{3} / 5 = 0.8$$

The membership function $R(x)$ is used to calculate the membership degree of subsets U_s, U_w, U_m, U_a and U_c . The results are as follows: $U_s=0, U_w=0, U_m=0.11, U_a=0.32$ and $U_c=0$.

- d, The cumulative intensity of the disturbance factor A is calculated.
The relative amount of the accumulated working process affected by the disturbance factor n_{ar} is:

$$n_{ar} = \frac{n_{aa}}{N} = \frac{10}{25} = 0.4$$

The membership function $R(x)$ is used to calculate the membership degree of subsets $A_w, A_m,$ and A_a . The results are as follows: $A_s=0.01, A_w=0.72,$ and $A_a=0$.

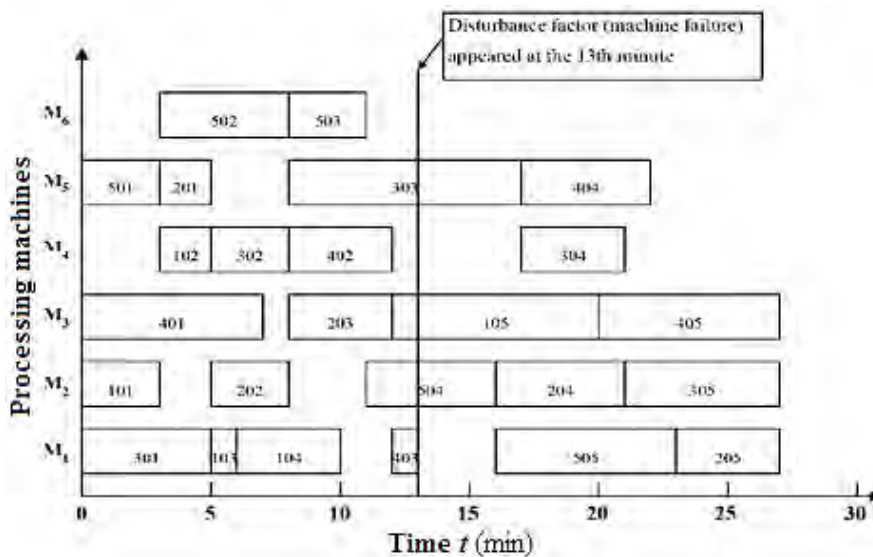


Figure 5: The rescheduling plan after the breakdown of processing machine M6.

The above calculation of membership values was used as input to the fuzzy neural network algorithm. A simulation was then conducted using MATLAB. The rescheduling requests P_r , D_e and I_g caused by type B disturbance factors are as follows: $P_r=1$, $D_e=0$, $I_g=0$.

As can be seen from the result of the rescheduling request, the production workshop needed to be rescheduled immediately. According to the number and characteristics of the affected processes, a partial modification method was used to generate a rescheduling scheme. By using the combination of an intelligent optimization algorithm and manual scheduling, a scheduling scheme with the maximum completion time of 27 minutes was obtained, as shown in Fig. 5. It can be seen from this figure that the fourth process of workpiece J_2 and the fourth process of workpiece J_4 were transferred to machine M_2 and machine M_5 , respectively.

③ Processing time offset

According to data analysis of the production system, after the customer inserted order was processed, a kind of type C disturbance factor (processing time offset) was generated. This kind of disturbance had little effect on the production system and could be eliminated using a periodic rescheduling strategy. In this case, the data reflecting the processing time offset are as follows: due to a toggle clamping fixture, workpiece J_5 on machine M_1 had a 10 minute delay in processing time; because of a temporary delivery date change, the fifth process of workpiece J_4 on machine M_3 was finished before the completion of the third process of workpiece J_7 ; due to a material transportation problem, the fourth process of workpiece J_2 on machine M_6 needed to be postponed by 5 minutes before it could then be processed.

According to the disturbance degree of these disturbance factors on the production system, as well as to the complexity of the scheduling problem, at the 21st minute, when the rescheduling cycle arrived, the complete modification rescheduling method was used. This was combined with manual adjustment and an intelligent optimization algorithm to optimize the subsequent processes. A rescheduling scheme with the maximum completion time of 37 minutes was obtained. From Fig. 6, it can be seen that the fourth process of workpiece J_6 (604) on machine M_1 , the fifth process of workpiece J_6 (605) and the fourth process of workpiece J_2 (204) on machine M_5 were completed on new machines.

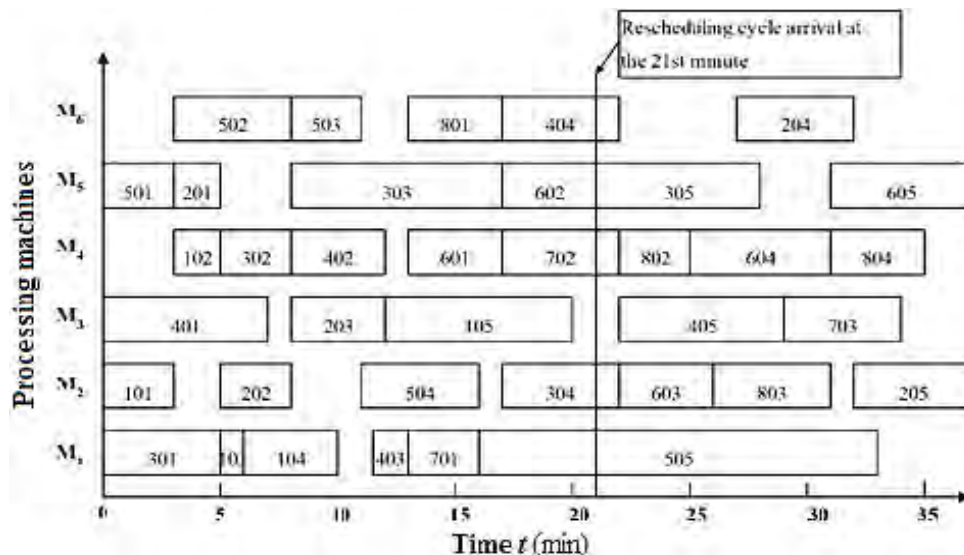


Figure 6: The rescheduling plan after the generation of a processing time offset.

The simulation results show that the adaptive rescheduling process proposed in this paper can effectively solve rescheduling problems of flexible job shops with different kinds of disturbance factors. An appropriate scheduling strategy and corresponding rescheduling method, which are chosen according to the impact of different kinds of disturbance factors on

the production system, can reduce rescheduling times, and the corresponding cost of calculation.

5. CONCLUSION

In order to eliminate the shortcomings of the existing rescheduling strategy, an improved hybrid rescheduling strategy was proposed for manufacturing firms, after using a fuzzy neural network to analyse type B disturbance factors. On the basis of this, an adaptive rescheduling process for a manufacturing system was constructed and an improved hybrid rescheduling strategy was proposed. The effectiveness of this improved strategy was illustrated by a case study of practical manufacturing. The simulation results show that this strategy can effectively eliminate the influence of various disturbance factors in a production system and can also reduce rescheduling times and maintain the stability of manufacturing systems. This provides a practical and effective solution to market change for firms adopting an MTO mode.

ACKNOWLEDGEMENT

This research is funded by The Fundamental and Advanced Research Projects of Chongqing city in China (CSTC2013jcyjA0564).

REFERENCES

- [1] Li, H.-T.; Womer, K. (2012). Optimizing the supply chain configuration for make-to-order manufacturing, *European Journal of Operational Research*, Vol. 221, No. 1, 118-128, doi:[10.1016/j.ejor.2012.03.025](https://doi.org/10.1016/j.ejor.2012.03.025)
- [2] Zhang, Z. G.; Kim, I.; Springer, M.; Cai, G. G.; Yu, Y.-G. (2013). Dynamic pooling of make-to-stock and make-to-order operations, *International Journal of Production Economics*, Vol. 144, No. 1, 44-56, doi:[10.1016/j.ijpe.2013.01.012](https://doi.org/10.1016/j.ijpe.2013.01.012)
- [3] Yu, C.; Ji, Y.; Qi, G.; Gu, X.; Tao, L. (2015). Group-based production scheduling for make-to-order production, *Journal of Intelligent Manufacturing*, Vol. 26, No. 3, 585-600, doi:[10.1007/s10845-013-0817-z](https://doi.org/10.1007/s10845-013-0817-z)
- [4] Qiao, F.; Li, L.; Wang, Z.-T.; Guo, C.-Z. (2007). Improved hybrid rescheduling strategy for semiconductor manufacturing, *Computer Integrated Manufacturing Systems*, Vol. 13, No. 3, 558-562
- [5] Dong, Y.-H.; Jang, J. (2012). Production rescheduling for machine breakdown at a job shop, *International Journal of Production Research*, Vol. 50, No. 10, 2681-2691, doi:[10.1080/00207543.2011.579637](https://doi.org/10.1080/00207543.2011.579637)
- [6] ElMaraghy, H. A.; ElMekkawy, T. Y. (2002). Deadlock-free rescheduling in flexible manufacturing systems, *CIRP Annals – Manufacturing Technology*, Vol. 51, No. 1, 371-374, doi:[10.1016/S0007-8506\(07\)61539-X](https://doi.org/10.1016/S0007-8506(07)61539-X)
- [7] Zakaria, Z.; Petrovic, S. (2012). Genetic algorithms for match-up rescheduling of the flexible manufacturing systems, *Computers & Industrial Engineering*, Vol. 62, No. 2, 670-686, doi:[10.1016/j.cie.2011.12.001](https://doi.org/10.1016/j.cie.2011.12.001)
- [8] Chen, K. J.; Ji, P. (2007). A genetic algorithm for dynamic advanced planning and scheduling (DAPS) with a frozen interval, *Expert Systems with Applications*, Vol. 33, No. 4, 1004-1010, doi:[10.1016/j.eswa.2006.08.025](https://doi.org/10.1016/j.eswa.2006.08.025)
- [9] Pfund, M. E. (2002). *Evaluation of uncertainty on scheduling algorithms in printed wiring board manufacturing* (PhD Dissertation), Arizona State University, Tempe
- [10] Guo, B.; Nonaka, Y. (1999). Rescheduling and optimization of schedules considering machine failures, *International Journal of Production Economics*, Vol. 60-61, 503-513, doi:[10.1016/S0925-5273\(98\)00155-8](https://doi.org/10.1016/S0925-5273(98)00155-8)
- [11] Akturk, M. S.; Gorgulu, E. (1999). Match-up scheduling under a machine breakdown, *European Journal of Operational Research*, Vol. 112, No. 1, 81-97, doi:[10.1016/S0377-2217\(97\)00396-2](https://doi.org/10.1016/S0377-2217(97)00396-2)

- [12] Li, Y.-W.; Gujrati, P.; Lan, Z.-L.; Sun, X.-H. (2007). Fault-driven rescheduling for improving system-level fault resilience, *Proceedings of the International Conference on Parallel Processing*, Session 4B, paper 39, doi:[10.1109/ICPP.2007.42](https://doi.org/10.1109/ICPP.2007.42)
- [13] Mendez, C. A.; Cerda, J. (2003). Dynamic scheduling in multiproduct batch plants, *Computers & Chemical Engineering*, Vol. 27, No. 8-9, 1247-1259, doi:[10.1016/S0098-1354\(03\)00050-4](https://doi.org/10.1016/S0098-1354(03)00050-4)
- [14] Church, L. K.; Uzsoy, R. (1992). Analysis of periodic and event driven rescheduling policies in dynamic shops, *International Journal of Computer Integrated Manufacturing*, Vol. 5, No. 3, 153-163, doi:[10.1080/09511929208944524](https://doi.org/10.1080/09511929208944524)
- [15] Rangsaritratsamee, R.; Ferrell Jr., W. G.; Kurz, M. B. (2004). Dynamic rescheduling that simultaneously considers efficiency and stability, *Computers & Industrial Engineering*, Vol. 46, No. 1, 1-15, doi:[10.1016/j.cie.2003.09.007](https://doi.org/10.1016/j.cie.2003.09.007)
- [16] Liu, G.-B. (2013). Dynamic schedule method based on improved rolling time domain optimization strategy, *Chinese Journal of Mechanical Engineering*, Vol. 49, No. 14, 182-190, doi:[10.3901/JME.2013.14.182](https://doi.org/10.3901/JME.2013.14.182)
- [17] Honkomp, S. J.; Mockus, L.; Reklaitis, G. V. (1999). A framework for schedule evaluation with processing uncertainty, *Computers & Chemical Engineering*, Vol. 23, No. 4-5, 595-609, doi:[10.1016/S0098-1354\(98\)00296-8](https://doi.org/10.1016/S0098-1354(98)00296-8)
- [18] Katragjini, K.; Vallada, E.; Ruiz, R. (2013). Flow shop rescheduling under different types of disruption, *International Journal of Production Research*, Vol. 51, No. 3, 780-797, doi:[10.1080/00207543.2012.666856](https://doi.org/10.1080/00207543.2012.666856)
- [19] Rubaai, A.; Young, P. (2011). EKF-based PI-/PD-like fuzzy-neural-network controller for brushless drives, *IEEE Transactions on Industry Applications*, Vol. 47, No. 6, 2391-2401, doi:[10.1109/TIA.2011.2168799](https://doi.org/10.1109/TIA.2011.2168799)
- [20] Otadi, M. (2014). Fully fuzzy polynomial regression with fuzzy neural networks, *Neurocomputing*, Vol. 142, 486-493, doi:[10.1016/j.neucom.2014.03.048](https://doi.org/10.1016/j.neucom.2014.03.048)
- [21] Kuo, R. J.; Tseng, W. L.; Tien, F. C.; Liao, T. W. (2012). Application of an artificial immune system-based fuzzy neural network to a RFID-based positioning system, *Computers & Industrial Engineering*, Vol. 63, No. 4, 943-956, doi:[10.1016/j.cie.2012.06.006](https://doi.org/10.1016/j.cie.2012.06.006)